

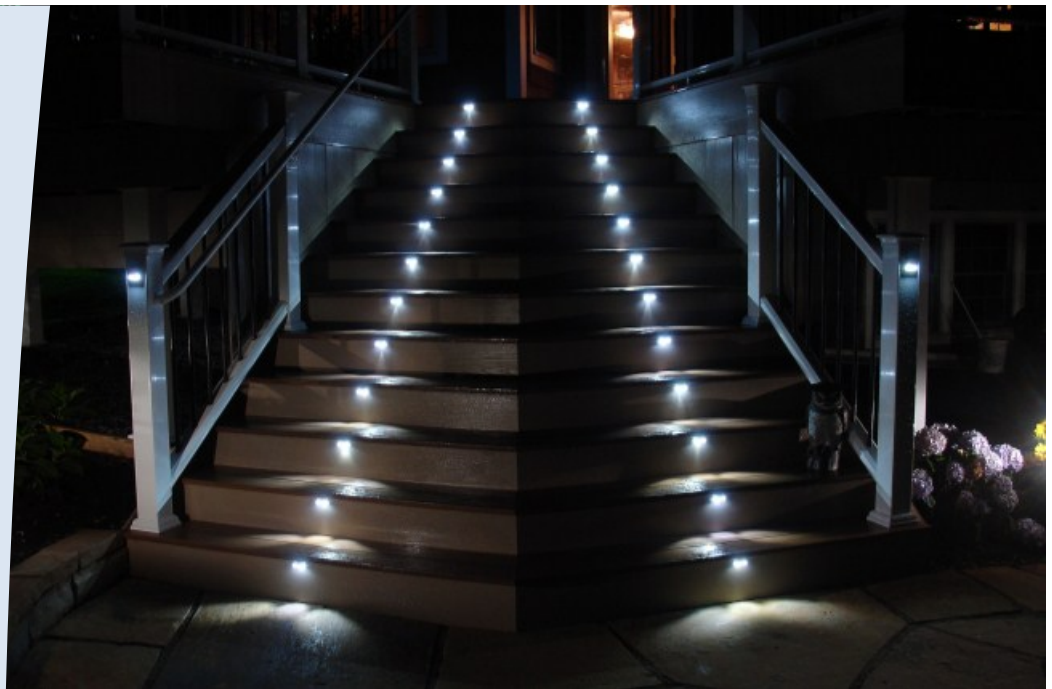


LED LIGHTING BUYERS GUIDE

- * Points to Consider When Purchasing Outdoor Lighting
- * Stair Safety & IRC Standards
- * Hidden Costs of Outdoor Lighting
- * Key Landscape Design Principles
- * Light Bulb Comparison
- * Key Features & Benefits of LED Lighting

POINTS TO CONSIDER WHEN PURCHASING OUTDOOR LIGHTING

- 1. Plan for long-term function.** i-lighting's unique waterproof wiring minimizes failure and keeps lights functioning properly year after year.
- 2. Account for energy costs.** An LED system uses 90% less energy than incandescent lamps saving \$100's a year in energy costs.
- 3. Plan for consistent voltage.** With i-lighting's low voltage, DC power supply, line voltage drop is not a concern.
- 4. Consider bulb replacement costs.**
- 5. Allow the option of adding additional lights in the future.** The lower wattage requirements of LEDs provide the flexibility to add additional fixtures and ultimately achieve optional lighting.



STAIR SAFETY & CODE REQUIREMENTS

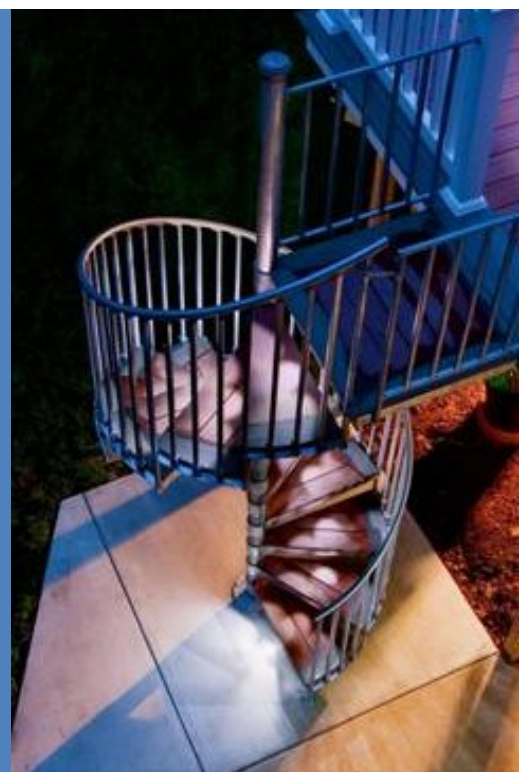
- ⇒ Over **1 MILLION** accidents resulting in injury per year on stairs.
- ⇒ Not surprising, this makes stair accidents the **SECOND LEADING CAUSE** of unintended injury, second only to car accidents.
- ⇒ There are **12,000** stair deaths per year, half of which occur in the home.

*Statistics from the National Safety Council.

According to the current International Residential Code (IRC) standards,

"All interior and exterior stairways shall be provided with a means to illuminate the stairs, including the landings and treads."

Reliable & affordable stair lighting from i-Lighting provides safety and security while meeting IRC requirements.



HIDDEN COSTS OF OUTDOOR LIGHTING

Save over 80% on energy costs and 60% on total lifetime cost with i-Lighting's LED systems. Consider these savings compared to traditional lighting systems.

Typical 7 Watt Incandescent Stair Light	Total Lifetime Cost*	i-lighting Total LED Lifetime Cost
5 Stair Lights	\$585	\$1.56
10 Stair Lights	\$1,170	\$3.12
20 Stair Lights	\$2,340	\$6.25

Typical 10 Watt Halogen Post Light	Total Lifetime Cost*	i-lighting Total LED Lifetime Cost
5 Post Lights	\$610	\$1.56
10 Post Lights	\$1,220	\$3.12
20 Post Lights	\$2,440	\$6.25

Typical 20 Watt Halogen Path Light	Total Lifetime Cost*	i-lighting Total LED Lifetime Cost
5 Path Lights	\$860	\$25.00
10 Path Lights	\$1,720	\$50.00
20 Path Lights	\$3,440	\$100.00

* Lifetime cost comparison over 50,000 hours of use.



KEY LANDSCAPE DESIGN PRINCIPLES

- 1. Be cohesive.** Create the same overall effect throughout the landscape.
- 2. Create depth.** Illuminate areas near and far from the property to for a 3D effect.
- 3. Accentuate focal points.** Highlight focal points such as entry ways and stationary pieces.
- 4. Explore perspective.** Review each angle of the property. Lighting many look good from one perspective but not from another.
- 5. Show balance and symmetry.** Lighting should be proportional across the various areas of the property.
- 6. Control quality and direction.** Select fixtures that set a desired aesthetic and direct the light appropriately.

LIGHT BULB COMPARISON

i-lighting's lighting system operates on LEDs, a highly energy efficient lighting technology. Residential LEDs use at least 75% less energy, and last 25 times longer than incandescent lighting.

KEY FEATURES & BENEFITS OF LED LIGHTING

The lifetime cost of the LED lighting system **SAVES YOU \$1,000's** in energy costs.

Residential LED's **USE 75% LESS ENERGY** and **LAST 25 TIMES LONGER** than incandescent lighting.

The LED lighting design **DOES NOT CREATE HEAT** making them safe for both children and pets while attracting less insects.

i-Lighting's LED bulbs are **GUARANTEED FOR LIFE** so you will never have to buy replacement bulbs again.

Energy Efficiency	Incandescent	Halogen	LEDs
Average Life Span	1,200 hours	2,000 hours	50,000 hours
Kilo-watts of Electricity Used*	1095 KWh / yr.	1095 KWh / yr.	54.75 KWh / yr.
Annual Operating Cost*	\$109.53 / yr.	\$109.53 / yr.	\$5.47 / yr.
Light Bulbs Needed Over the Lifetime of System**	42 bulbs	25 bulbs	1 bulb
Carbon Dioxide Emissions*	1500 lbs. / yr.	1051 lbs. / yr.	75 lbs. / yr.
Sensitivity to Low Temps	Some	Some	None
Sensitivity to Humidity	Some	Some	No
Durable	No	No	Yes
Heat Emitted	85 btu's / hour	85 btu's / hour	3.4 btu's / hour
Failure Modes	Some	Some	Not Typical

* Statistics based on the equivalent of thirty 20 Watt incandescent/halogen light bulbs.

** Based on 50,000 hours.

CONTACT US

i-Lighting, LLC
P.O. Box 678
North East, MD 21901

Toll Free: (888) 305-4232
MD: (410) 287-3232

sales@ilighting.info
www.i-lightingonline.com

For the additional LED information and tips on outdoor lighting follow us on Facebook at www.facebook.com/iLightingLLC.

